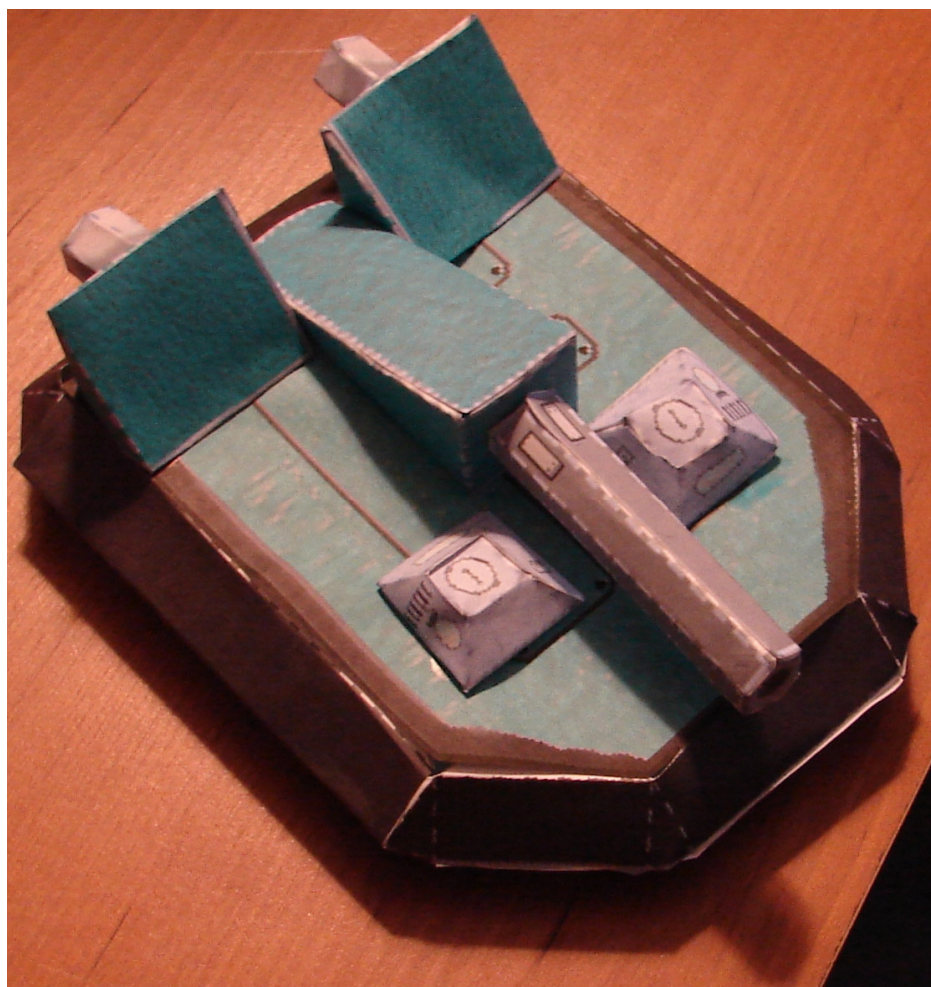
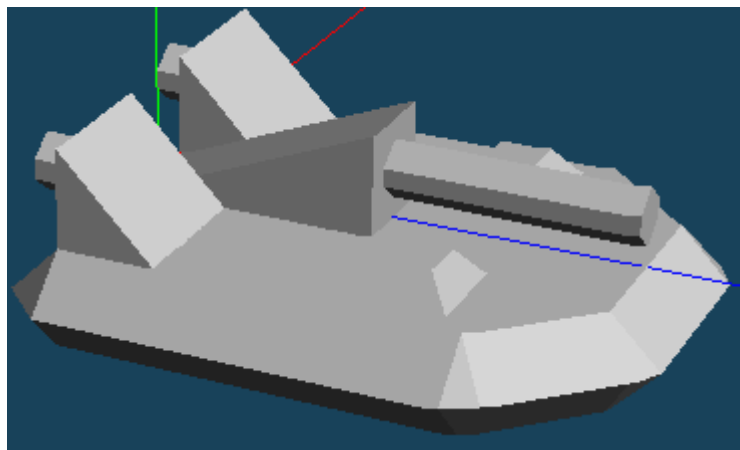
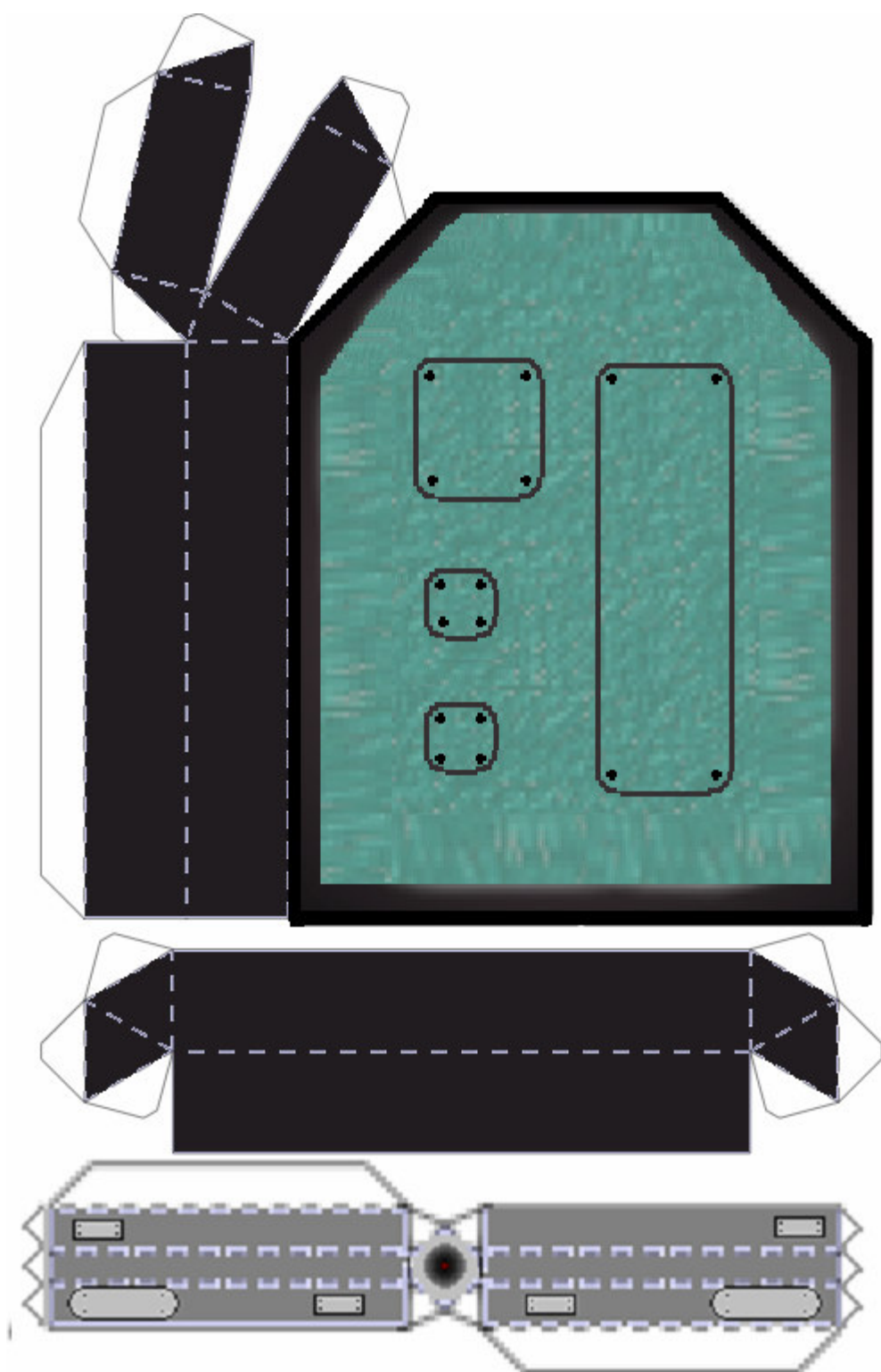


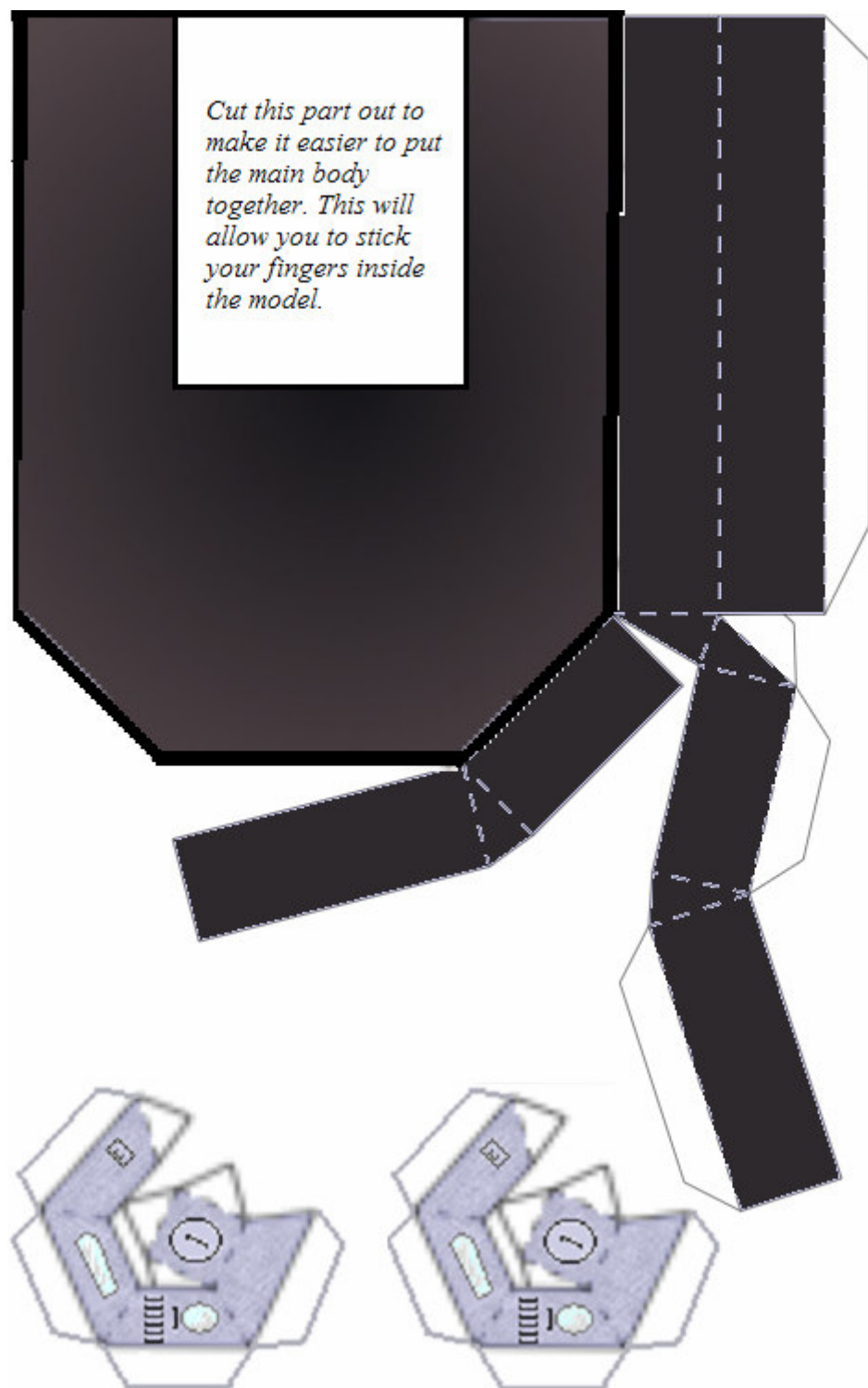
Hovercraft

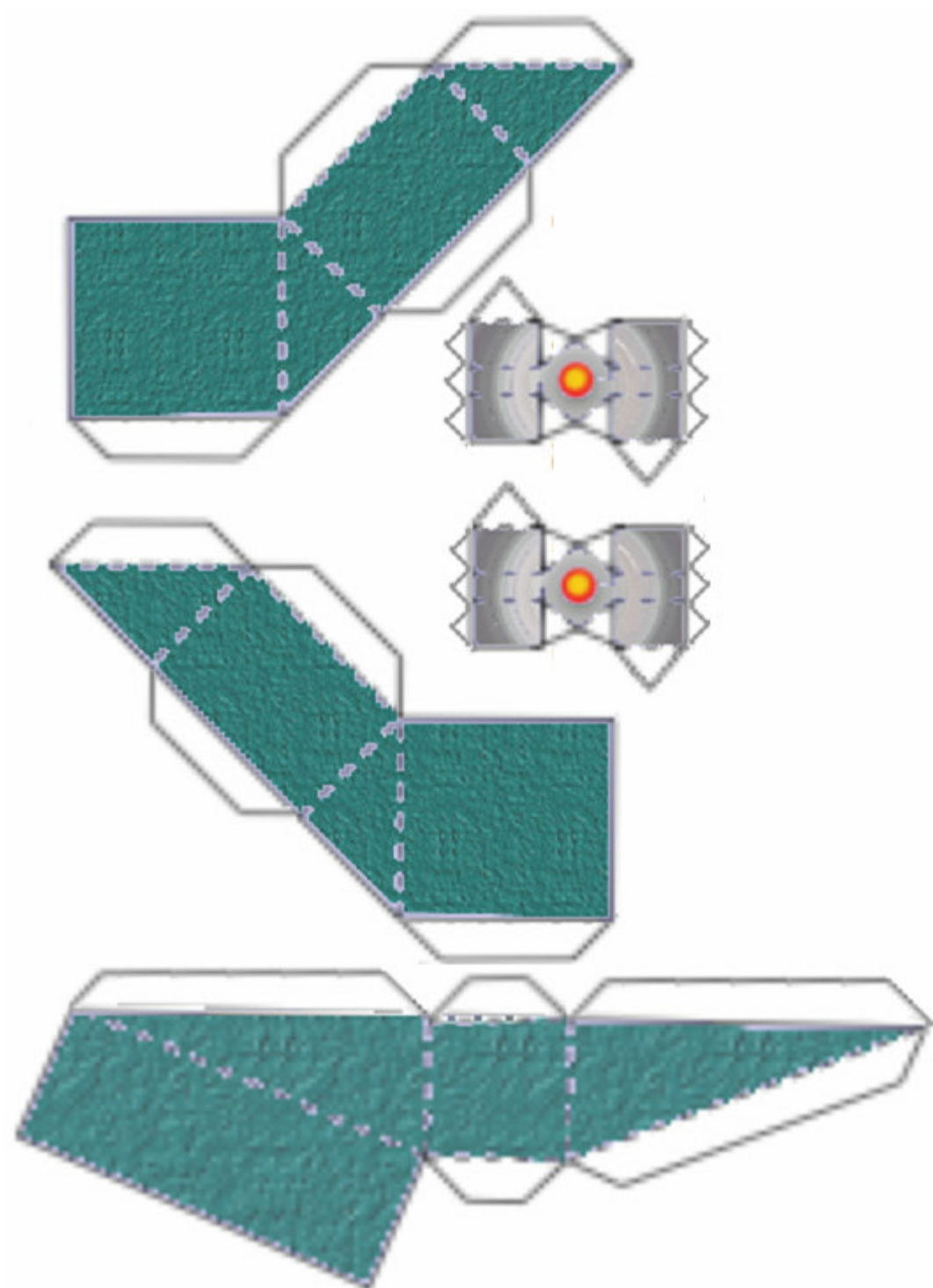
By Jarrett Voight

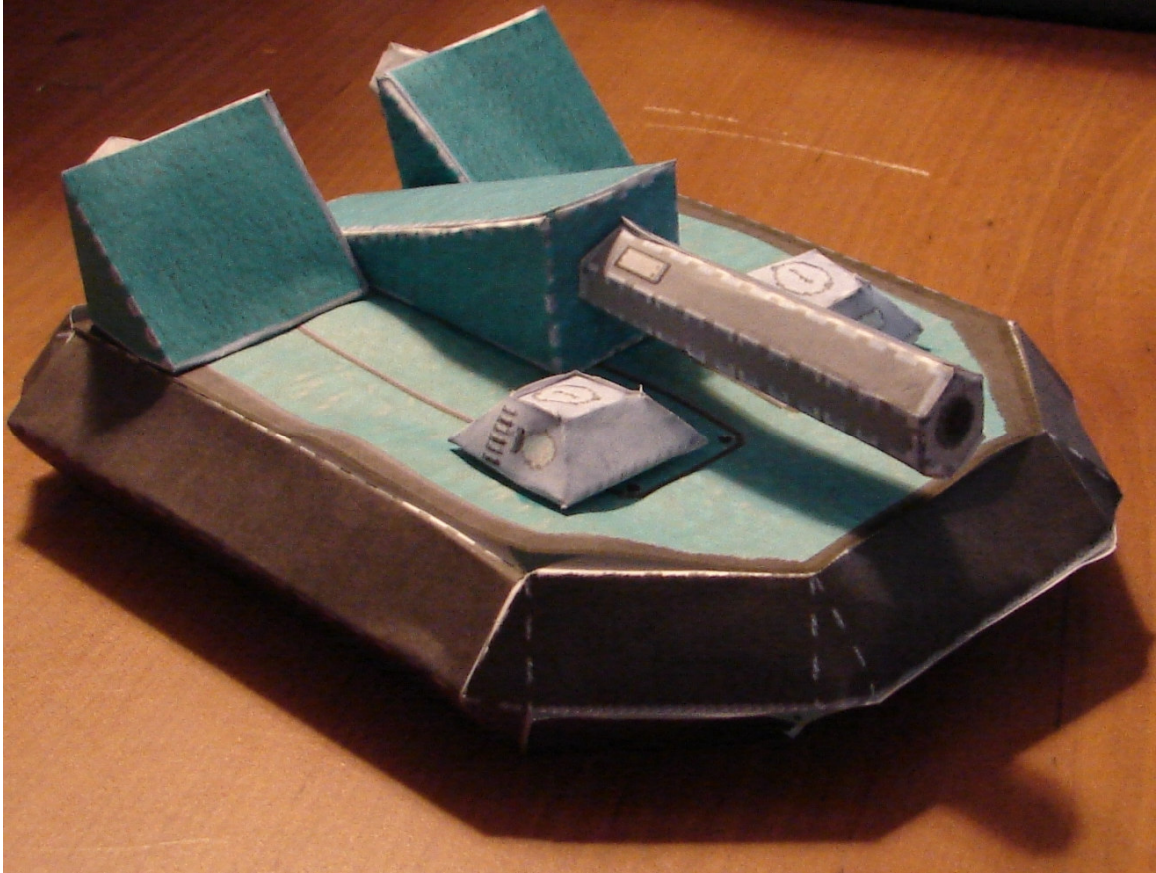




Cut this part out to make it easier to put the main body together. This will allow you to stick your fingers inside the model.







Refer to the following extremely basic steps to build the model using the same technique that I used.

- Step 1:** *Start by cutting out every thing and folding the basic shapes such as the triangles and the cabins.*
- Step 2:** *Next, cut and fold the main body parts. Use glue stick to secure the flaps and the tape to reinforce it if necessary. Be sure to cut out the area on the bottom so it will be easy to construct the model.*
- Step 3:** *Rub glue stick on the unused flaps on both sides of the main body. Carefully connect the pieces and with your thumb inside the model and your forefinger outside pinch it for twenty to thirty seconds.*
- Step 4:** *Take the hexagonal pieces and fold them, fold the unused flaps in and rub them on the glue stick. Connect the two short ones with the tall triangles in the exact center of the back square of the triangle. The long one... the barrel goes on the longer triangle; again, in the exact center.*
- Step 5:** *Finally, use Elmer's glue to on all the unused flaps and situate them in the proper places. See the picture to see where they go.*